

UTAH MUSIC FESTIVAL & SCHOOL



Dear Current, Former, and Potential UMF&S Faculty,

The faculty and staff of the Utah Music Festival & School would like to invite you, your family, and students to consider joining in the 18th season of great music and fun in the spectacular mountains of Park City, Utah! This year, the festival runs from June 24th - August 18th. So far, we have received interest from over 50 university and secondary music departments, conservatories, major symphony orchestras, and youth orchestras throughout the nation. Even if you've already made plans to attend another music camp, UMF&S has a flexible participation policy, which might allow you to attend a variety of weekly sessions here in Park City. Children of faculty receive free tuition!

The festival has grown over the past 17 years to include students from all over the country, and professionals from the Baltimore Symphony, Dallas Symphony, Detroit Symphony Orchestra, Chicago Symphony, Cincinnati Symphony, Colorado Symphony, Denver Symphony, Ft. Worth Symphony, Indianapolis Symphony, L.A. Philharmonic, Metropolitan Opera Orchestra, New Jersey Symphony, New World Symphony, New York Philharmonic, Orpheus, Philadelphia Orchestra, Phoenix Symphony, Pittsburgh Symphony, St. Louis Symphony, St. Paul Chamber Orchestra, Seattle Symphony, Utah Symphony, and many of the major conservatories & music schools throughout the nation.

For the most part, any larger chamber orchestral works are done without a conductor, and chamber music works emphasize mixed instrumentation of Strings, Woodwinds, Brass, Percussion, Piano, Harp, Guitar, and Voice. When the size of the student body allows, larger works with conductor are performed. Wherever possible, the festival provides concerto opportunities for both faculty and students. Composers are able to create and have their works premiered on a weekly basis!

The educational program is modeled after Marlboro's pattern of coaching and performing with the students. It's all about providing the students opportunities to excel in an encouraging and relaxed atmosphere. Faculty and students perform three concerts per weekend, and students have many opportunities for informal concerts at area ski resorts and restaurants.

For the first time, the festival & school will have a wonderful "campus" experience while both residing and performing at Canyons Four Season Resort - <http://canyonsresort.com>. Rehearsal facilities will



be in the newly-built Weilenmann School of Discovery - <http://wsdpc.org>, and the beautiful Park City Community Church - <http://www.parkcitycommunitychurch.org>! During the year, this charter school accommodates over 500, K-8 students, and will offer a beautiful alpine setting for rehearsals and individual practicing. Grocery stores are nearby and luncheon facilities will be available in the cafeteria. The Park City Community Church offers a large variety of rehearsal and practice facilities, as well as the premier performing acoustic venue in town!

Performance venues include a variety of schools, churches, synagogues, ski resorts, and 5-star hotels in Park City, Sundance, beautiful halls at BYU, University of Utah, Utah State University, and fine acoustic spaces in several Salt Lake City churches.

In addition, a multitude of recreational activities such as mountain biking, hiking, horse-back riding, tennis, soccer, swimming, fishing, boating, and white-water rafting add to the enjoyment of faculty and students' time in Utah. The students grow musically through performances, rehearsals, private lessons, masterclasses, excerpt coaching and audition training, and will fully enjoy their time in Utah thanks to the mentoring they receive from the faculty, and the fun experiences they share with others.

For your students, UMF&S tuition is quite reasonable when compared to other festivals around the country. In addition to financial aid and internship possibilities, students will have an opportunity to earn several weeks of free tuition based on their recruitment efforts. Faculty will also receive, in addition to a travel allowance and modest fees, 25% of all collected tuition which they have attracted to the festival. Even if you can't attend this summer, you will receive a check for the students you have recommended who attend. Simply email this invitation packet around to your colleagues and students, and the festival will track those who actually attend to credit your account. Also, feel free to print out the flier and poster below in order to post and distribute them in your schools.

Thanks very much for considering adding your talents to a summer of music in the mountains!

Best wishes,

A handwritten signature in black ink that reads "Eric".

Eric Samuels
CEO & Artistic Director
Utah Music Festival & School



HIGHLIGHTS FOR 2013

- Canyons Four-Season Resort Residency
- Weilenmann School of Discovery Music Department Renovations
- Music Technology Courses - Web Design, Audio Engineering, Social Networking & SEO
- Cafeteria Plan for Lunches
- Additional Daily & Weekly Organized Recreational Activities
- Addition of Choral, Country & Cowboy, R&B, Folk, & Pop Divisions
- Festival coordination of Restaurant venue performing opportunities for students and interested faculty
- “Tell a Friend” financial incentive plan offers potential to earn FREE WEEKS
- Tuition Discount for multiple family members
- Scholarship assistance for pre-formed ensembles
- New Reduced 2013 Tuition & Housing Fees
 - Out-of-State Tuition - \$500 / week
 - Utah Tuition - \$375 / week
 - Housing - \$250 / week (2 - 4 / room)

PRINTABLE POSTER TO DISTRIBUTE

UMF&S 2013 POSTER (this 8.5” x 11” can also be expanded to 11” x 17”)
or use the flier (front & back) on pages 9, 10, & 11 to create hand-out fliers. Thanks!

UTAH MUSIC FESTIVAL & SCHOOL

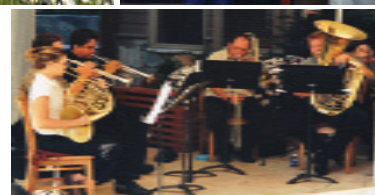
JUNE 24 - AUGUST 18, 2013

800.998.UTAH ★ UTAHMUSIC.ORG

CLASSICAL
JAZZ
COUNTRY
FOLK
POP
TANGO
MOVIE

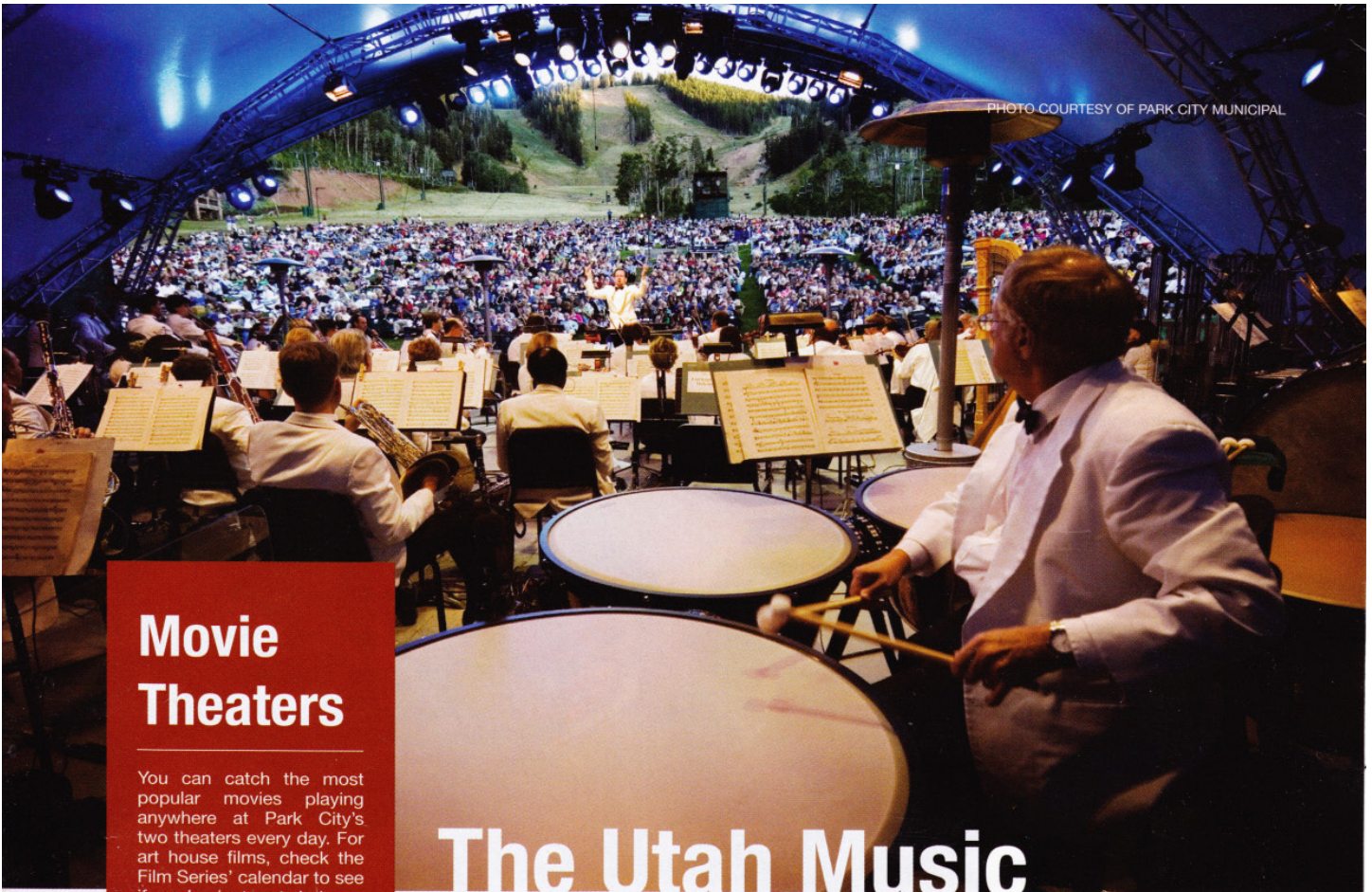
PIANO, GUITAR,
VOICE, HARP,
STRINGS,
WOODWINDS,
BRASS, PERCUSSION,
COMPOSITION,
CONDUCTING

Professional Coaching
Perform with Soloists,
Chamber Musicians &
Orchestral Faculty
Private Lessons
Masterclasses
Music Technology
Audition Training
Held in the Alpine
Beauty of Park City
Resort Accommodations
Recreational Activities
Cultural Field Trips
World-View Seminar
Scholarships Available



GREAT MUSIC, GREAT FUN, IN THE MOUNTAINS!

LISTENING TO THE UTAH SYMPHONY AT DEER VALLEY!



Movie Theaters

You can catch the most popular movies playing anywhere at Park City's two theaters every day. For art house films, check the Film Series' calendar to see if you're in town during a screening of something you won't see at a mainstream theater.

Cinemark Holiday Village 4

1776 Park Ave
Park City, UT
1-800-FANDANGO Exp
Code 1172#

Redstone 8 Cinemas

6030 N. Market St
Park City, UT
(435)575-0221
www.redstone8cinemas.com

Park City Film Series

Jim Santy Auditorium in the
Park City Library
1255 Park Ave
Park City (435) 615-8291
www.parkcityfilmseries.com

The Utah Music Festival & School

The Utah Music Festival & School, running July 5-Aug. 28, presents its 16th year of nationally-known concerts and music educational program.

Joining in the concerts and educational training have been members of Orpheus, the New York Philharmonic, Chicago Symphony, Philadelphia Orchestra, the L.A. Philharmonic, Detroit Symphony, St. Paul Chamber Orchestra, the Metropolitan Opera Orchestra, and music schools such as Juilliard, Curtis, Manhattan School of Music, Northwestern, Cincinnati Conservatory, the Music Institute of Chicago, and the Colburn School.

Over the years, the festival has expanded to include classical, jazz, country, blues, R & B, pop, tango and movie music. Students coach and perform with some of the finest Soloists, Chamber Musicians, Faculty, and Recording Artists from the nation's leading ensembles, orchestras, colleges and conservatories.

With a student / faculty ratio of approximately five to one, students receive weekly private lessons, ensemble coaching and participate in masterclasses and "jam" sessions, as well as field trips to musical performances.

Venues include beautiful Park City and Deer Valley hotels, restaurants, schools

and churches. Additional venues include Salt Lake City, Sundance, Brigham Young University, University of Utah, Snowbird and Solitude ski resorts.

Special cultural field trips are arranged to hear concerts by the Utah Symphony, Utah Festival Opera, Mountain Town Stages concerts and the Park City Performing Arts Series.

Tickets are \$12 for adults, \$10 for students and senior citizens and free for children. For more information visit www.utahmusic.org or call (435) 640-9393.

Utah Music Festival
July 5-Aug. 18



VISIT US ON FACEBOOK!

Utah Music Festival & School

<http://www.facebook.com/pages/Utah-Music-FestivalSchool/144387395572177>

https://www.facebook.com/pages/Utah-Music-Festival-School/144387395572177?id=144387395572177&sk=photos_stream

https://www.facebook.com/utahmusic1/photos_stream

Eric Samuels

<http://www.facebook.com/utahmusic1>

WEILENMANN SCHOOL OF DISCOVERY!

<http://wsdpc.org>

LINK TO OUR WEB SITE!

www.utahmusic.org

LINK TO OUR SOUND CLOUD!

<https://soundcloud.com/utahmusicfestival>

VISIT US ON YOUTUBE!

<http://www.youtube.com/channel/UCtHeToqWTGN6bLteQO9Z34g/videos>

DAILY SCHEDULE, HOUSING, FEES, MEALS, RECREATION, STUDENT RECRUITMENT INCENTIVES, INTERNSHIPS, & FINANCIAL AID

Daily rehearsals, masterclasses, lessons, and practice times are scheduled from 9:00 am - 3:00 pm. Additional personal practice is encouraged from 8:00 am - 9:00 am, and 7:00 pm - 9:00 pm. Approximately 30 hours of instruction are offered from Monday - Friday in preparation for 2-3 weekly faculty/student concerts. Additional informal concerts are arranged throughout Park City and adjoining communities throughout the week. Evening restaurant "gigs" are encouraged and coordinated by the staff. Run-out concerts to Salt Lake City, Provo, Logan, Sundance, Heber City, & Midway offer students a fun way to share their music with new audiences. Faculty and students typically attend a variety of concerts by the Utah Symphony, Mt. Town Stages, Utah Festival Opera, and the Shakespeare Festival.

Housing is provided by the festival in ski resort condos, townhouses, and private homes. Families are encouraged to join in the musical and recreational activities. Children of faculty members receive free tuition. Fees are based on tuition, with a target of \$200 / week, plus a travel stipend of \$300 (depending on distance). A tax deductible letter for additional costs may assist faculty with their taxes. Meals are prepared in common with other faculty and students. The Park City free bus service is available to travel the 10 to 20 minutes needed to reach most any location in the area. Participants will be picked up at the airport.

Pools, tennis courts, mountain biking, hiking, horseback riding, fishing, boating, ski resort gondolas, health clubs, and many sports fields are always available to festival participants (some include a modest price). Students are encouraged to bring mountain bikes, and other sports gear which will be needed. Between now and the festival, students will also have the opportunity to receive 15% of any tuition they attract through recruiting their friends. Internships are also available. A financial aid form is on the website.

Since students ages 8 through college, graduate, and young professionals join together to make the festival & school a success, a variety of housing situations are provided. Faculty, staff, interns, and visiting parents oversee the musical development, recreational opportunities, safety, and welfare of all younger participants. The festival's goal is to provide a wholesome environment in which to learn and grow.



THE FOLLOWING IS A LETTER TO PARENTS OF YOUNGER CHILDREN, WHO MAY PARTICIPATE IN SHORTER CLASSES, WITH MORE FLEXIBLE ATTENDANCE OPTION

Dear Youth Division Parents & Students,

This note is just a reminder that the Utah Music Festival & School, along with many other performers and teachers from Park City, Utah, and around the nation, would like to invite your families to join us in a summer music camp at Weilenmann School of Discovery & Park City Community Church. The combination of individual and group instruction will be run at convenient times to fit into your summer activity & travel schedules.

Students will receive instruction in their instruments, group ensemble coaching, theory instruction, and opportunities to perform throughout the program. Those who stay through the hour lunchtime will be supervised in recreational activities and will be asked to provide their own lunches.

Parents are encouraged to participate in their childrens' learning experience as observers, participants, and volunteer organizers. Thanks to the great music program in our local schools, your children have been advancing in their musical abilities and hopefully taking more pride in their accomplishments. As you know, the discipline, focus, and enjoyment, which children derive from their efforts in music, easily carry over to their academic and life skills. By providing a way to continue this growth during the summer, the Utah Music Festival & School will enthusiastically guide your children's talents to grow even more.

The following materials will provide a little background on our summer musical activities over the past 17 years.

Thank you for considering a summer of fun musical activities for your children and the community.

Sincerely,

Eric & Alison Samuels
CEO & Artistic Directors
Utah Music Festival & School
Park City School of Music
Park City Community Orchestra & Choir

SUMMER YOUTH MUSIC CAMP DESCRIPTION

Activities will begin June 24th and run through August 18th, 2013. Flexible attendance is available from with three sessions: 9:00 am - 12:00 pm / 1:00 pm - 3:00 pm / 9:00 am - 3:00 pm (1 hour for lunch)

Programs will be offered for both Suzuki and traditionally taught students ranging in age from 8-years old through college and graduate school. For the younger students, the festival & school will offer both morning and afternoon private and group instruction in their particular instrument, music theory, piano, and performance training. For students who stay for both morning and afternoon sessions, there will be an hour lunch and recreation break. Performance opportunities will be scheduled throughout the week. The younger students will also have the opportunity to observe the more advanced student ensemble rehearsals, masterclasses, and performances. Coordinated field trips to attend some of the many other musical events at Deer Valley, in Park City and Salt Lake, will be organized for the participants.

Faculty performers will come from Park City, Salt Lake, Provo, and colleges and conservatories around the nation. The more advanced, full-time participants will receive approximately 30 hours/week of ensemble coaching, private lessons, masterclasses, and structured practice sessions. The younger program will offer the opportunity to receive up to 25 hours / week of instruction should the students decide to attend the entire week. Depending on the length of participation, students will perform in one to two Faculty / Student concerts throughout the week.

In comparison to other music festivals around the country, UMF&S is very economical! UMF&S cost for in-state tuition is \$375 / week, and out-of-state is \$500 / week + \$250 / week, should the student need housing.

Those staying for both sessions will have a lunch and recreation break from 12:00 PM - 1:00 PM. The "Youth Division," ages 8 - 14, will have the option of two sessions - 9:00 AM - 12:00 PM, and 1:00 PM - 3:00 PM.

TUITION FOR YOUTH DIVISION PROGRAM

Individual sessions: \$45 - morning session / \$30 - afternoon session

Both sessions: \$75 (includes 1-hour lunch and supervised recreational time - students must provide lunch.)

Entire week: 25 hours instruction + performances = \$375

A minimum attendance of two days (either or both sessions) is required during the week.

CANYONS FOUR-SEASON RESORT - <http://taliskerrealty.com/2011/01/07/sundial-lodge-3720-n-sundial-ct-c312-2/>

RED PINE CONDOMINIUMS - http://www.allseasonsresortlodging.com/park_city/redpine/virtual_tour.html

ADDITIONAL PARK CITY LODGING

<http://www.resortpropertymanagement.com/the-canyons/condos/juniper-landing-1107>

<http://www.bloomingpc.com/park-city-rental-management.htm>

<http://ptarmiganpropertyrentals.homestead.com/>

THINGS TO DO IN PARK CITY

<http://www.visitparkcity.com/>

<http://www.parkcityinfo.com/>

<http://www.parkcityinfo.com/visitors/specials-and-promotions/hot-deals/>

<http://www.parkrecord.com>

<http://www.utah.com/database/events/?id=3011>

<http://www.parkcity.org/index.aspx?page=224>

<http://www.parkcityweek.com/>

<http://www.canyonsresort.com/>

STUDENT FLIERS FOR PRINT & DISTRIBUTION

Please feel free to print both the front and back of the following fliers to post and hand out. The reverse side of the flier contains festival details, and the two versions give you the in-state and out-of-state option. They are approximately 5.25" x 8", and can be altered according to your printer's settings. Thank You!

UTAH MUSIC FESTIVAL & SCHOOL

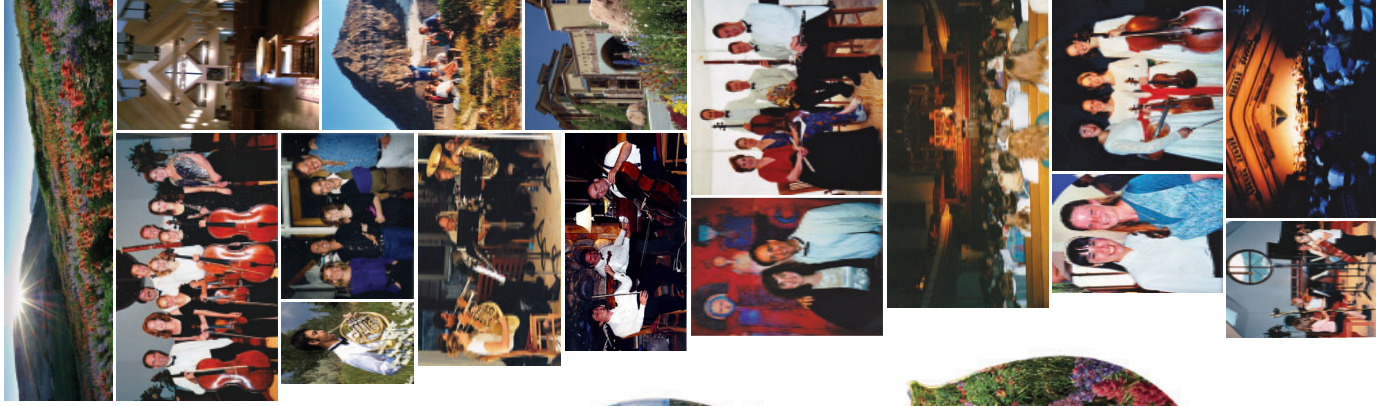
JUNE 24 - AUGUST 18, 2013

800.998.UTAH ★ UTAHMUSIC.ORG

CLASSICAL
JAZZ
COUNTRY
FOLK
POP
TANGO
MOVIE

PIANO, GUITAR,
VOICE, HARP,
STRINGS,
WOODWINDS,
BRASS, PERCUSSION,
COMPOSITION,
CONDUCTING

Professional Coaching
Perform with Soloists,
Chamber Musicians &
Orchestral Faculty
Private Lessons
Masterclasses
Music Technology
Audition Training
Held in the Alpine
Beauty of Park City
Resort Accommodations
Recreational Activities
Cultural Field Trips
World-View Seminar
Scholarships Available



UTAH MUSIC FESTIVAL & SCHOOL

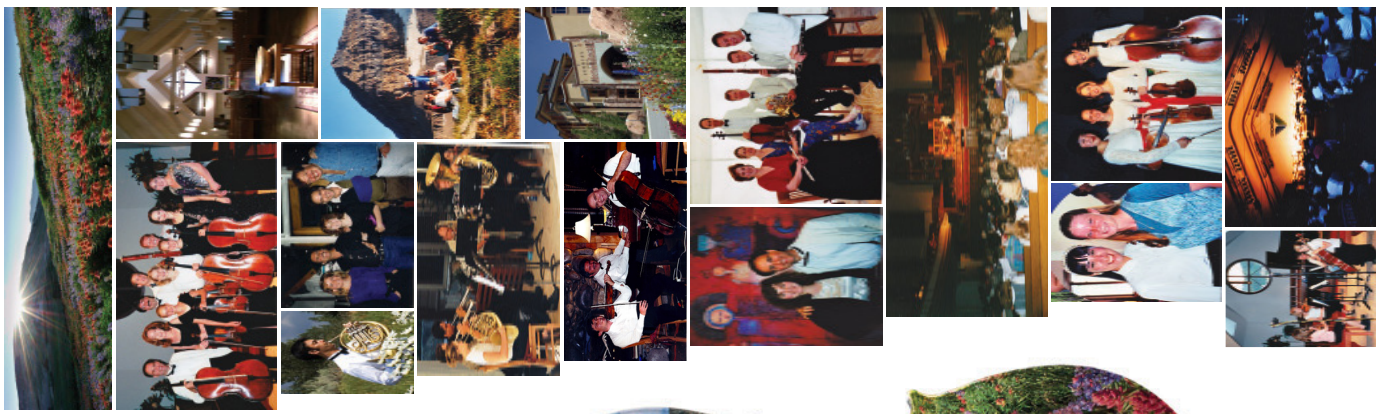
JUNE 24 - AUGUST 18, 2013

800.998.UTAH ★ UTAHMUSIC.ORG

CLASSICAL
JAZZ
COUNTRY
FOLK
POP
TANGO
MOVIE

PIANO, GUITAR,
VOICE, HARP,
STRINGS,
WOODWINDS,
BRASS, PERCUSSION,
COMPOSITION,
CONDUCTING

Professional Coaching
Perform with Soloists,
Chamber Musicians &
Orchestral Faculty
Private Lessons
Masterclasses
Music Technology
Audition Training
Held in the Alpine
Beauty of Park City
Resort Accommodations
Recreational Activities
Cultural Field Trips
World-View Seminar
Scholarships Available



GREAT MUSIC, GREAT FUN, IN THE MOUNTAINS!

GREAT MUSIC, GREAT FUN, IN THE MOUNTAINS!

FACULTY

(Former & Potential / Artists & Programs Subject to Change)

Craig Larsen, piano
Hanchien Lee, piano
Anthony Molinaro, piano
Ted Rosenthal, piano
Bette Condon, oboe
Geraldyn Giovanetti, oboe
Laura Griffiths, oboe
Alecia Lawyer, oboe
Dwight Parry, oboe
April Clayton, flute
Alison Griffiths, flute
Ron De Kant, clarinet
Jerry Flor, clarinet
Susan Martula, clarinet
Matthew Nelson, clarinet
Dan Spitzer, clarinet
Beth Giacobassi, bassoon
Tristan Rennie, bassoon
Charles Ulfery, bassoon
Marc Reese, trumpet
Randolph Lee, trumpet
Teresa Bosch, horn
Larry Lowe, horn
Orlando Pandolphi, horn
Michelle Perry, horn
Robert Rouch, horn
Russell Campbell, trbn.
Doug Neirman, trbn.
Gabriel Sears, tuba
Tully Cathey, guitar
Grant Geissman, guitar
John Flanders, sax
Ray Smith, sax
Michael Huff, choral
Winton White, composer

Craig Larsen, piano
Hanchien Lee, piano
Anthony Molinaro, piano
Ted Rosenthal, piano
Bette Condon, oboe
Geraldyn Giovanetti, oboe
Laura Griffiths, oboe
Alecia Lawyer, oboe
Dwight Parry, oboe
April Clayton, flute
Alison Griffiths, flute
Ron De Kant, clarinet
Jerry Flor, clarinet
Susan Martula, clarinet
Matthew Nelson, clarinet
Dan Spitzer, clarinet
Beth Giacobassi, bassoon
Tristan Rennie, bassoon
Charles Ulfery, bassoon
Marc Reese, trumpet
Randolph Lee, trumpet
Teresa Bosch, horn
Larry Lowe, horn
Orlando Pandolphi, horn
Michelle Perry, horn
Robert Rouch, horn
Russell Campbell, trbn.
Doug Neirman, trbn.
Gabriel Sears, tuba
Tully Cathey, guitar
Grant Geissman, guitar
John Flanders, sax
Ray Smith, sax
Michael Huff, choral
Winton White, composer

Craig Larsen, piano
Hanchien Lee, piano
Anthony Molinaro, piano
Ted Rosenthal, piano
Bette Condon, oboe
Geraldyn Giovanetti, oboe
Laura Griffiths, oboe
Alecia Lawyer, oboe
Dwight Parry, oboe
April Clayton, flute
Alison Griffiths, flute
Ron De Kant, clarinet
Jerry Flor, clarinet
Susan Martula, clarinet
Matthew Nelson, clarinet
Dan Spitzer, clarinet
Beth Giacobassi, bassoon
Tristan Rennie, bassoon
Charles Ulfery, bassoon
Marc Reese, trumpet
Randolph Lee, trumpet
Teresa Bosch, horn
Larry Lowe, horn
Orlando Pandolphi, horn
Michelle Perry, horn
Robert Rouch, horn
Russell Campbell, trbn.
Doug Neirman, trbn.
Gabriel Sears, tuba
Tully Cathey, guitar
Grant Geissman, guitar
John Flanders, sax
Ray Smith, sax
Michael Huff, choral
Winton White, composer

STUDENT PROGRAM

Coach & Perform with some of the finest Soloists, Chamber Musicians, Faculty, and Recording Artists from the nation's leading ensembles, orchestras, colleges & conservatories. With a student / faculty ratio of approximately three to one, students receive weekly private lessons & participate in masterclasses and "jam" sessions. They rehearse & coach daily with faculty from 9:00 to 3:00, with one hour for lunch & recreation. Personal practice time is structured by the faculty, and students perform weekly in 3 to 4 faculty/student concerts. Concert & rehearsal venues are provided by several local schools, churches, & Canyons Ski Resort. Additional venues include Salt Lake City, Sundance, BYU, University of Utah, Utah State University, & Snowbird & Solitude Ski Resorts. Special cultural field trips are arranged to hear concerts by the Utah Symphony, Utah Festival Opera, Mt. Town Stages, and the Park City Performing Arts Series.

HOUSING

Held in the beautiful alpine ski resort town of Park City, Utah. Students are housed with faculty, chaperones, parents, and administrative assistants in Condominiums & Townhouses in Canyons Ski Resort area & throughout Park City. Units are equipped with kitchens, and students are responsible for their own food. Several swimming pools, jacuzzis, and tennis courts are available for daily activities. Student occupancy varies from 2 - 4 per room.

RECREATION

Recreational activities including health club, tennis, swimming, river rafting, mountain climbing, biking, fishing, & horse back riding are widely available. Students are encouraged to bring hiking shoes, swim suits, tennis racquets, mountain bikes, etc. Recreational activities are typically planned by students and faculty around rehearsal & practice schedules.

TRANSPORTATION

Students are encouraged to bring their personal bicycles & automobiles. However, transportation is provided to grocery stores and other festival activities. A free bus service runs throughout Park City. Ski lift rides are available at discount group rates.

APPLICATIONS, FEES, & SCHOLARSHIPS

Apply On-Line at: www.utahmusic.org
Upload Audition Materials at: www.utahmusic.org
Email questions to: utahmusic@parkcity.net
Contact - 800.998.UTAH (8824) or 435.640.9393
Tuition - \$500 / week (includes Private & Ensemble Instruction, Music, Concert & Airport transportation)
Housing - \$250 / week
Application Fee - \$50 (non-refundable)
Meals - Provided by students in condo w/ full kitchens
Limited Scholarships are available based on financial need & length of participation. Financial aid forms are available on the website: www.utahmusic.org

STUDENT PROGRAM

Coach & Perform with some of the finest Soloists, Chamber Musicians, Faculty, and Recording Artists from the nation's leading ensembles, orchestras, colleges & conservatories. With a student / faculty ratio of approximately three to one, students receive weekly private lessons & participate in masterclasses and "jam" sessions. They rehearse & coach daily with faculty from 9:00 to 3:00, with one hour for lunch & recreation. Personal practice time is structured by the faculty, and students perform weekly in 3 to 4 faculty/student concerts. Concert & rehearsal venues are provided by several local schools, churches, & Canyons Ski Resort. Additional venues include Salt Lake City, Sundance, BYU, University of Utah, Utah State University, & Snowbird & Solitude Ski Resorts. Special cultural field trips are arranged to hear concerts by the Utah Symphony, Utah Festival Opera, Mt. Town Stages, and the Park City Performing Arts Series.

HOUSING

Held in the beautiful alpine ski resort town of Park City, Utah. Students are housed with faculty, chaperones, parents, and administrative assistants in Condominiums & Townhouses in Canyons Ski Resort area & throughout Park City. Units are equipped with kitchens, and students are responsible for their own food. Several swimming pools, jacuzzis, and tennis courts are available for daily activities. Student occupancy varies from 2 - 4 per room.

RECREATION

Recreational activities including health club, tennis, swimming, river rafting, mountain climbing, biking, fishing, & horse back riding are widely available. Students are encouraged to bring hiking shoes, swim suits, tennis racquets, mountain bikes, etc. Recreational activities are typically planned by students and faculty around rehearsal & practice schedules.

TRANSPORTATION

Students are encouraged to bring their personal bicycles & automobiles. However, transportation is provided to grocery stores and other festival activities. A free bus service runs throughout Park City. Ski lift rides are available at discount group rates.

APPLICATIONS, FEES, & SCHOLARSHIPS

Apply On-Line at: www.utahmusic.org
Upload Audition Materials at: www.utahmusic.org
Email questions to: utahmusic@parkcity.net
Contact - 800.998.UTAH (8824) or 435.640.9393
Tuition - \$500 / week (includes Private & Ensemble Instruction, Music, Concert & Airport transportation)
Housing - \$250 / week
Application Fee - \$50 (non-refundable)
Meals - Provided by students in condo w/ full kitchens
Limited Scholarships are available based on financial need & length of participation. Financial aid forms are available on the website: www.utahmusic.org

FACULTY

(Former & Potential / Artists & Programs Subject to Change)

Craig Larsen, piano
Hanchien Lee, piano
Anthony Molinaro, piano
Ted Rosenthal, piano
Bette Condon, oboe
Geraldyn Giovanetti, oboe
Laura Griffiths, oboe
Alecia Lawyer, oboe
Dwight Parry, oboe
April Clayton, flute
Alison Griffiths, flute
Ron De Kant, clarinet
Jerry Flor, clarinet
Susan Martula, clarinet
Matthew Nelson, clarinet
Dan Spitzer, clarinet
Beth Giacobassi, bassoon
Tristan Rennie, bassoon
Charles Ulfery, bassoon
Marc Reese, trumpet
Randolph Lee, trumpet
Teresa Bosch, horn
Larry Lowe, horn
Orlando Pandolphi, horn
Michelle Perry, horn
Robert Rouch, horn
Russell Campbell, trbn.
Doug Neirman, trbn.
Gabriel Sears, tuba
Tully Cathey, guitar
Grant Geissman, guitar
John Flanders, sax
Ray Smith, sax
Michael Huff, choral
Winton White, composer

"...offering an alternative to the well-known Marlboro Music Festival." **SALT LAKE TRIBUNE**

"... a world-class music festival in our own backyard!"

SENATOR ORRIN HATCH

"the festival makes the music experience fun, creative, and rewarding...they are dedicated to enriching the cultural & educational atmosphere in our community."

SUSAN WYMER, Park City Community Church

"The festival is a great musical and social experience!

Many of these students don't often get the exposure to a high caliber of music making. It's great for them to play chamber music with experienced faculty."

DESIRÉE RUHSTRAT, International Concert Violinist, Music Institute of Chicago Faculty, Lincoln Trio

"Our patrons mention the outstanding quality of the performances comparing them to those in New York City...our clientele receives an enriched cultural and educational experience... their music enhances Park City and Summit County's summer musical atmosphere!" **JAMES DUMAS, Chef de Cuisine, Deer Valley Club**
"The superb concert with its precision and tone quality seemed flawless...the Mendelssohn with its brilliance of technique, and never-wavering unified concentration, held everyone spellbound."

COHLEEN BISCHOFF, Temple Square Concerts

Musicians at a variety of levels collaborate and perform together. This unique approach provides an experience that allows for maximum growth as a human being, and a musician! **GIOVANNI VENEZIA (2012 Student)**

FACULTY

(Former & Potential / Artists & Programs Subject to Change)

Craig Larsen, piano
Hanchien Lee, piano
Anthony Molinaro, piano
Ted Rosenthal, piano
Frank Scott, piano
Bette Condon, oboe
Geraldyn Giovanetti, oboe
Laura Griffiths, oboe
Alecia Lawyer, oboe
Dwight Parry, oboe
April Clayton, flute
Alison Griffiths, flute
Ron De Kant, clarinet
Jerry Flor, clarinet
Susan Martula, clarinet
Matthew Nelson, clarinet
Dan Spitzer, clarinet
Beth Giacobassi, bassoon
Tristan Rennie, bassoon
Charles Ullery, bassoon
Ann Marie Hudson, viola
Helen McDermott, viola
Travis Maril, viola
Karie Prescott, viola
Meng Wang, viola
Orlando Pandolphi, horn
Michelle Perry, horn
Robert Routh, horn
Russell Campbell, trbn.
Doug Neirman, trbn.
Gabriel Sears, tuba
Tully Cathey, guitar
Grant Geissman, guitar
Mauricio Arias, piano
John Flanders, sax
Ray Smith, sax
Michael Huff, choral
Paul Kenyon, piano

STUDENT PROGRAM

Coach & Perform with some of the finest Soloists, Chamber Musicians, Faculty, and Recording Artists from the nation's leading ensembles, orchestras, colleges & conservatories. With a student / faculty ratio of approximately three to one, students receive weekly private lessons & participate in masterclasses and "jam" sessions. They rehearse & coach daily with faculty from 9:00 to 3:00, with one hour for lunch & recreation. Personal practice time is structured by the faculty, and students perform weekly in 3 to 4 faculty/student concerts. Concert & rehearsal venues are provided by several local schools, churches, & Canyons Ski Resort. Additional venues include Salt Lake City, Sundance, BYU, University of Utah, Utah State University, & Snowbird & Solitude Ski Resorts. Special cultural field trips are arranged to hear concerts by the Utah Symphony, Utah Festival Opera, Mt. Town Stages, and the Park City Performing Arts Series.

HOUSING

Held in the beautiful alpine ski resort town of Park City, Utah. Students are housed with faculty, chaperones, parents, and administrative assistants in Condominiums & Townhouses in Canyons Ski Resort area & throughout Park City. Units are equipped with kitchens, and students are responsible for their own food. Several swimming pools, jacuzzis, and tennis courts are available for daily activities. Student occupancy varies from 2 - 4 per room.

RECREATION

Recreational activities including health club, tennis, swimming, river rafting, mountain climbing, biking, fishing, & horse back riding are widely available. Students are encouraged to bring hiking shoes, swim suits, tennis racquets, mountain bikes, etc. Recreational activities are typically planned by students and faculty around rehearsal & practice schedules.

TRANSPORTATION

Students are encouraged to bring their personal bicycles & automobiles. However, transportation is provided to grocery stores and other festival activities. A free bus service runs throughout Park City. Ski lift rides are available at discount group rates.

APPLICATIONS, FEES, & SCHOLARSHIPS

Apply On-Line at: www.utahmusic.org
Upload Audition Materials at: www.utahmusic.org
Email questions to: utahmusic@parkcity.net
Contact - 800.998.UTAH (8824) or 435.640.9393
Tuition - \$375 / week - **Daily Classes** - 9 AM - 12 PM = \$45 / 1 PM - 3 PM = \$30 / 9 AM - 3 PM = \$75
Housing - \$250 / week
Application Fee - \$50 (non-refundable)
Meals - Provided by students in condo w/ full kitchens

Limited Scholarships are available based on financial need & length of participation. Financial aid forms are available on the website: www.utahmusic.org

FACULTY

(Former & Potential / Artists & Programs Subject to Change)

Craig Larsen, piano
Hanchien Lee, piano
Anthony Molinaro, piano
Ted Rosenthal, piano
Frank Scott, piano
Bette Condon, oboe
Geraldyn Giovanetti, oboe
Laura Griffiths, oboe
Alecia Lawyer, oboe
Dwight Parry, oboe
April Clayton, flute
Alison Griffiths, flute
Ron De Kant, clarinet
Jerry Flor, clarinet
Susan Martula, clarinet
Matthew Nelson, clarinet
Dan Spitzer, clarinet
Beth Giacobassi, bassoon
Tristan Rennie, bassoon
Charles Ullery, bassoon
Ann Marie Hudson, viola
Helen McDermott, viola
Travis Maril, viola
Karie Prescott, viola
Meng Wang, viola
Orlando Pandolphi, horn
Michelle Perry, horn
Robert Routh, horn
Russell Campbell, trbn.
Doug Neirman, trbn.
Gabriel Sears, tuba
Tully Cathey, guitar
Grant Geissman, guitar
Mauricio Arias, piano
John Flanders, sax
Ray Smith, sax
Michael Huff, choral
Winton White, composer

STUDENT PROGRAM

Coach & Perform with some of the finest Soloists, Chamber Musicians, Faculty, and Recording Artists from the nation's leading ensembles, orchestras, colleges & conservatories. With a student / faculty ratio of approximately three to one, students receive weekly private lessons & participate in masterclasses and "jam" sessions. They rehearse & coach daily with faculty from 9:00 to 3:00, with one hour for lunch & recreation. Personal practice time is structured by the faculty, and students perform weekly in 3 to 4 faculty/student concerts. Concert & rehearsal venues are provided by several local schools, churches, & Canyons Ski Resort. Additional venues include Salt Lake City, Sundance, BYU, University of Utah, Utah State University, & Snowbird & Solitude Ski Resorts. Special cultural field trips are arranged to hear concerts by the Utah Symphony, Utah Festival Opera, Mt. Town Stages, and the Park City Performing Arts Series.

HOUSING

Held in the beautiful alpine ski resort town of Park City, Utah. Students are housed with faculty, chaperones, parents, and administrative assistants in Condominiums & Townhouses in Canyons Ski Resort area & throughout Park City. Units are equipped with kitchens, and students are responsible for their own food. Several swimming pools, jacuzzis, and tennis courts are available for daily activities. Student occupancy varies from 2 - 4 per room.

RECREATION

Recreational activities including health club, tennis, swimming, river rafting, mountain climbing, biking, fishing, & horse back riding are widely available. Students are encouraged to bring hiking shoes, swim suits, tennis racquets, mountain bikes, etc. Recreational activities are typically planned by students and faculty around rehearsal & practice schedules.

TRANSPORTATION

Students are encouraged to bring their personal bicycles & automobiles. However, transportation is provided to grocery stores and other festival activities. A free bus service runs throughout Park City. Ski lift rides are available at discount group rates.

APPLICATIONS, FEES, & SCHOLARSHIPS

Apply On-Line at: www.utahmusic.org
Upload Audition Materials at: www.utahmusic.org
Email questions to: utahmusic@parkcity.net
Contact - 800.998.UTAH (8824) or 435.640.9393
Tuition - \$375 / week - **Daily Classes** - 9 AM - 12 PM = \$45 / 1 PM - 3 PM = \$30 / 9 AM - 3 PM = \$75
Housing - \$250 / week
Application Fee - \$50 (non-refundable)
Meals - Provided by students in condo w/ full kitchens

Limited Scholarships are available based on financial need & length of participation. Financial aid forms are available on the website: www.utahmusic.org

"...offering an alternative to the well-known Marlboro Music Festival." **SALT LAKE TRIBUNE**

"... a world-class music festival in our own backyard!"

SENATOR ORRIN HATCH

"the festival makes the music experience fun, creative, and rewarding...they are dedicated to enriching the cultural & educational atmosphere in our community."

SUSAN WYMER, Park City Community Church

"The festival is a great musical and social experience!

Many of these students don't often get the exposure to a such a high caliber of music making. It's great for them to play chamber music with experienced faculty."

DESIREE RUHSTRAT, International Concert Violinist, Music Institute of Chicago Faculty, Lincoln Trio

"Our patrons mention the outstanding quality of the performances comparing them to those in New York City...our clientele receives an enriched cultural and educational experience... their music enhances Park City and Summit County's summer musical atmosphere!" **JAMES DUMAS, Chef de Cuisine, Deer Valley Club**
"The superb concert with its precision and tone quality seemed flawless...the Mendelssohn with its brilliance of technique, and never-wavering unified concentration, held everyone spellbound."

COHLEEN BISCHOFF, Temple Square Concerts
Musicians at a variety of levels collaborate and perform together. This unique approach provides an experience that allows for maximum growth as a human being, and a musician! **GIOVANNI VENEZIA (2012 Student)**